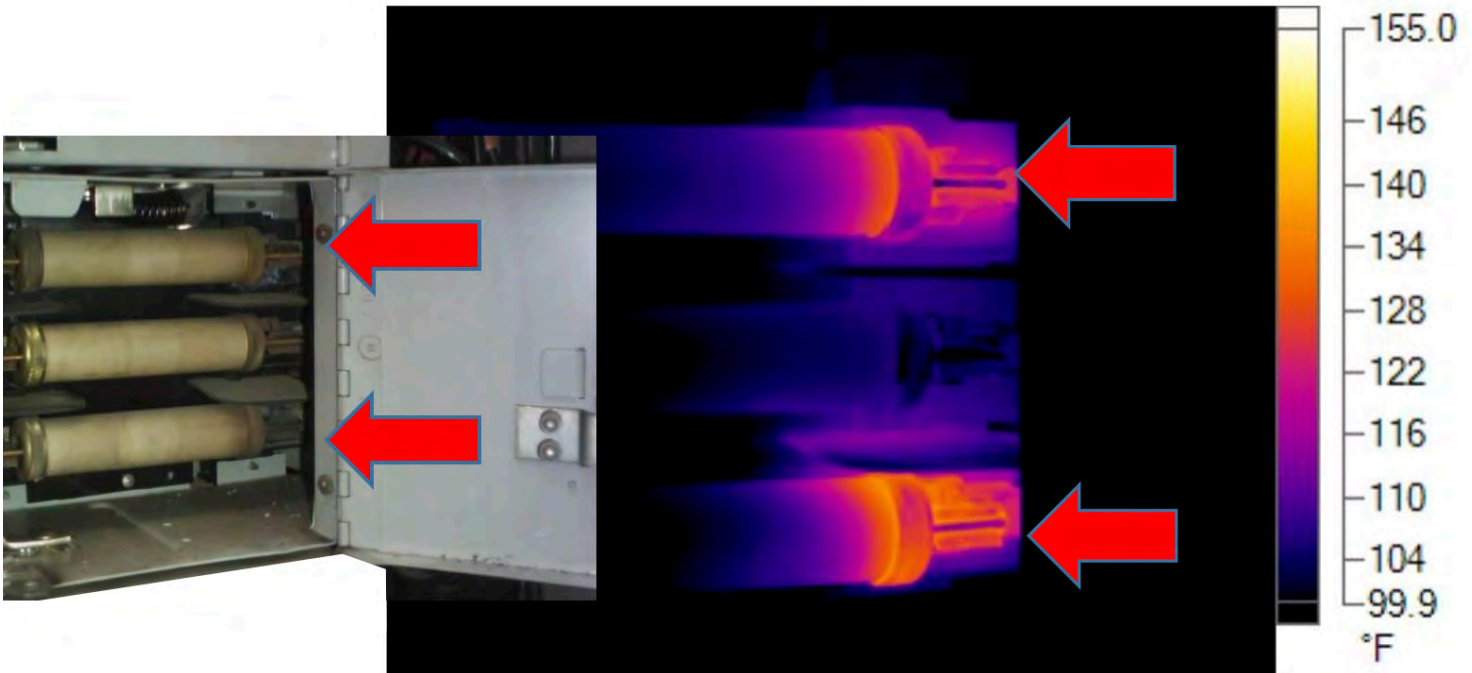


LEVEL 1 - INFRARED THERMOGRAPHY



Revealing Potential Hazards



Detecting potential hazards that may shut down production:

- Potential problems with relays, contacts, fuse blocks
- Overloads and overheating
- Loose/deteriorated connections
- Open circuits
- Unbalanced loads
- Inductive heating
- Defective equipment



Infrared Thermography Works

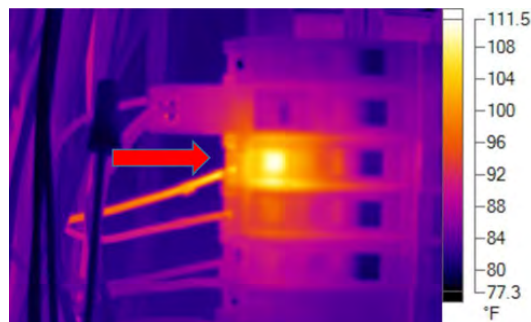
By using a thermal imaging device, we take apparent temperature readings of the electrical components to determine areas in a facility that have potential problems.

Professional Reporting

Lines in red indicate a problem >

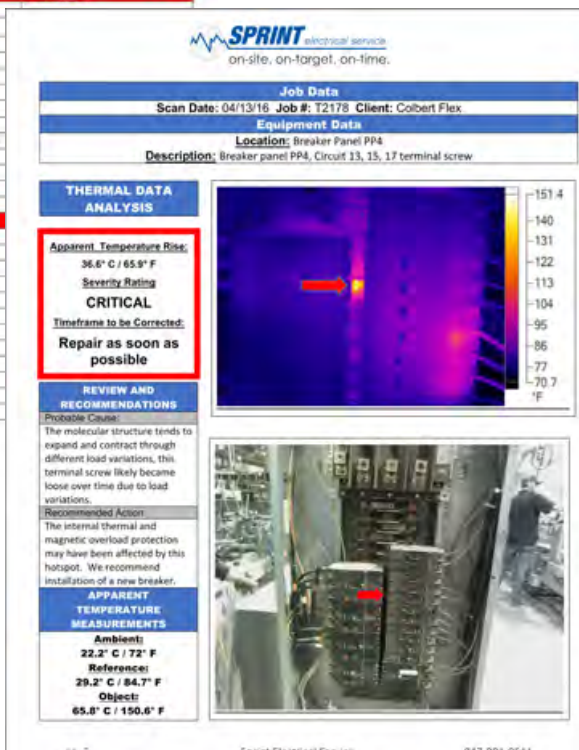
The equipment list shows ALL tested areas. The line items NOT showing red are normal, with no problems found.

 on-site, on-target, on-time.		
INSPECTION EQUIPMENT LIST		
LOCATION: Colbert Flex 13970 Polo Trail Dr. Lake Forest, IL 60045 DATE: 04/13/16 JOB# T2178		
LOCATION	EQUIPMENT	DETAILS
13970 Polo Trail Dr. Lake Forest IL 60045	552 Distribution panel	
	552 Control panel	Siemens manual motor starter G21-B (10.2)
	551 Distribution panel, main	
	551 secondary	
	Breaker panel PP4A	
	Breaker panel PP4	Circuit 13, 15, 17, terminal screw N Hot (10.4)
	Breaker panel PP3	
	Breaker panel PP6	
	Breaker panel PP5	
	Main Distribution Gear	
	Breaker panel PP1	
	Fused disconnect press 121 blower	
	Fused disconnect press 120 blower	
	Fused disconnect CPS blower	
	Fused disconnect Rotary switch motor	
	Breaker panel LP1	
	Breaker panel XFRM	
	Distribution panel DPG	
	Breaker panel PP400A	
	120 Kompenith Distribution panel	
	120 Mark Andy control panel	
	120 Xeric dryer cabinet	
	119 IR dryer cabinet	
	119 Main drive cabinet	
	PP400A fused disconnect	
	PP400A disconnect motor starter	
	120 UVT1	
	120 UVT2	
	120 UVT3	
	120 UVT4	
	119 Die cutter	
	Baker control panel	



Box in red indicates < problem

This report page shows a circuit that has a temperature rise of 65.9 degrees and is considered critical.




Sprint Thermographer & Electrician On-Site

FDGdfjbhH Yfa c[fUd\ Yf.'All

Thermographers are Level 2 and have extensive experience in detecting accurate hot-spots at all wiring termination points, as well as control components, etc.

GDGdfjbh9`YwfjWub.'will accompany the Thermographer in visual inspections of A cabinets, and/or switch gear, in your facility. Using tools, such as amp probes, to check all loads required for proper wire sizes.

MULTIPLE, FULL AND HALF DAY RATES

Sprint Electrical Service Preventive Maintenance Program		
Level 4	INCLUDES LEVEL 1 + 2 + 3	Breaker Injection Testing
Level 3	INCLUDES LEVEL 1 + 2	Megger Insulation Testing
Level 2	INCLUDES LEVEL 1	Building Power Maintenance
Level 1	Infrared Thermography	 on-site, on-target, on-time.

CALL SPRINT ELECTRICAL SERVICE • 847.981.0611 • www.sprintes.com